



FLYINGVOICE

FLYINGVOICE PHONES CATALOG

www.flyingvoice.com

Flyingvoice Network Technology Co., Ltd.



Our Phones



Advanced IP Phone



FIP15G Plus



FIP14G



FIP13G

Entry-level IP Phone



FIP11C(P)



FIP10(P)



FIP12WP

Cordless IP Phone



FIP16 Plus

FIP15G Plus

Elite Touch Screen IP Phone

- 4.3" 480 x 272-pixel IPS touch screen
- 10 SIP accounts, 64 one-touch DSS keys, 64 BLF keys
- 2 x 10/100/1000Mbps Ethernet ports
- Integrated 2.4G & 5G Wi-Fi, PoE
- Built-in Bluetooth 4.2
- 2 x USB ports for USB recording, EHS wireless earphones
- HD Voice
- Level 7 backlight adjustment
- 6-Way Conference

Ideal for CEO, Director, Manager





FIP14G

Enterprise GigE IPS Color Screen IP Phone

- 3.5" 480*320px IPS Color Screen
- 8 SIP Lines
- PoE
- 2.4G Wi-Fi
- USB 2.0
- HD Voice
- Opus codec
- 10/100/1000Mbps Gigabit Ethernet
- 6-Way Conference



FIP13G

Advanced Business GigE Color Screen IP Phone

- 2.8" 320*240px Color Screen
- 4 SIP Lines
- PoE
- 2.4G Wi-Fi
- USB 2.0
- HD Voice
- Opus Codec
- 10/100/1000Mbps Gigabit Ethernet
- 6-Way Conference



FIP11C / FIP11CP

Basic Business Color Screen IP Phone

- 2.4" 320*240px Color Screen
- 3 SIP Lines
- PoE (FIP11CP)
- 2.4G Wi-Fi
- HD Voice
- Opus Codec
- 10/100Mbps Ethernet
- 6-Way Conference



FIP10 / FIP10P

Entry-level Business IP Phone

- 128*64px B&W LCD Screen
- 2 SIP Lines
- PoE (FIP10P)
- 2.4G Wi-Fi
- HD Voice
- Opus Codec
- 10/100Mbps Ethernet
- 6-Way Conference



FIP12WP

Big Button IP Phone for Hospital and Nursing Home

- FSTN B/W 192x64-pixel graphic LCD screen
- 2 SIP accounts, 4 DSS keys
- 2 x 10/100Mbps Ethernet port
- Integrated 2.4GHz Wi-Fi, PoE



FIP16 Plus

Portable Dual-Band IP Phone with Belt Clip

- 1.8" 128x160-pixel TN color screen
- 2 SIP accounts
- Support 2.4GHz & 5GHz Wi-Fi
- HD voice, 3.5mm earphone jack
- Support IEEE802.11k/r fast roaming
- 4000mA battery, 12 hours talk time, 120 hours standby time
- IP52 certificated



Common Features of FIP1X Series IP Phone

UI

To improve user experience, FIP1X series IP phones adopted the brand new and easy-to-use UI design.

HD



Support G.722, Opus wide-band codecs, adopt high-definition voice and noise reduction technology to deliver high-quality voice calls.



2.4GHz

Support 2.4GHz wireless connection that gives you the flexibility to make and receive calls from anywhere.

IPv6

Support IPV4, IPV6, IPV4/IPV6 dual-stack modes.

FACS

FACS & FDC management systems and PnP (Plug and Play) feature can achieve efficient deployment and batch configuration.

Wi-Fi to LAN

Phones connect to the wireless network, then devices such as PC, printer or attendance machine can get a wired network via its LAN port.



AP Mode

Phone can be used as AP to transform the wired signal into a wireless one, providing easy access to wireless Internet for laptops, mobile phones or other wireless devices.



Product Concept

Flyingvoice P1X series IP phones with a clean design and simple taste for business users.

The series includes 10 models: P10, P10P, P10G, P10W, P10LTE, P11, P11P, P11G, P11W, P11LTE.

Common features

- P10 display 132*64px B/W LCD
- P11 display 2.4 inch color screen LCD
- 7-Level backlight adjustment and timing screen off
- 2 SIP Accounts
- 2 x 10/100 Mbps Ethernet port
- HD voice, Opus
- Up to 6-way conference
- 2000 Phonebooks
- Auto provisioning
- Unified Firmware



P11 / P10

Differential features

No.	Model	Screen	GE	PoE	Wi-Fi	LTE
1	P10/P10P	132*64px B/W LCD	-	P10P	-	-
2	P10G	132*64px B/W LCD	√	√	-	-
3	P10W	132*64px B/W LCD	-	-	2.4G/5G	-
4	P10 LTE	132*64px B/W LCD	-	-	-	√
5	P11/P11P	2.4" 320*240px TN color LCD	-	P11P	-	-
6	P11G	2.4" 320*240px TN color LCD	√	√	-	-
7	P11W	2.4" 320*240px TN color LCD	-	-	2.4G/5G	-
8	P11 LTE	2.4" 320*240px TN color LCD	-	-	-	√

P1X Series IP Phone - Appearance evolution



FIP10/FIP10P

P10/P/G/W/LTE



High Performance Entry-level IP Phone



FIP11C/FIP11CP

P11/P/G/W/LTE



Entry-level Color-Screen IP Phone

P1X Series IP Phone - Upcoming models

FLYINGVOICE



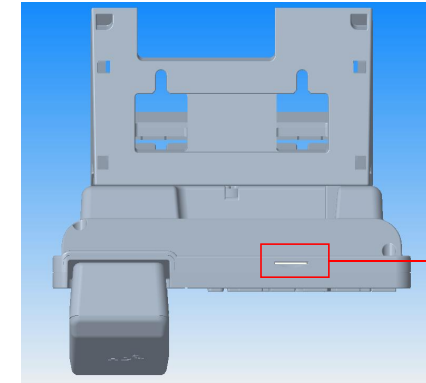
P10G / P11G

- 10/100/1000Mbps Ethernet
- PoE
- Level 7 backlight adjustment
- HD Voice
- 2 SIP accounts (no line key)
- 6-Way Conference
- Automatic deployment
- Wall-mountable (15°)
- Desktop (45° & 60° optional)



P10W / P11W

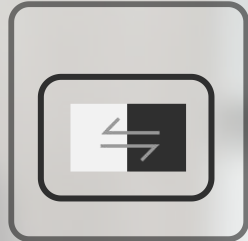
- 2.4G & 5G Wi-Fi
- 10/100Mbps Ethernet
- Level 7 backlight adjustment
- HD Voice
- 2 SIP accounts (no line key)
- 6-Way Conference
- Automatic deployment
- Wall-mountable (15°)
- Desktop (45° & 60° optional)



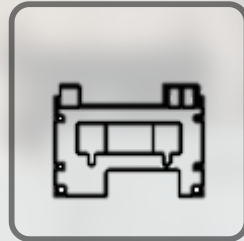
(External card type)
SIM card slot

P10LTE / P11LTE

- Support for patch SIM card & external SIM card
- 10/100Mbps Ethernet
- Level 7 backlight adjustment
- HD Voice
- 2 SIP accounts (no line key)
- 6-Way Conference
- Automatic deployment
- Wall-mountable (15°)
- Desktop (45° & 60° optional)



Backlight Adjustment



New stand



6-Way conference



HD Voice



Management Platform

Backlight		
1. Backlight Time	15s	◀▶
2. Active Level	7	◀▶
3. Inactive Level	0	◀▶
Back	Switch	OK



Display setting of backlight

- Support 7 levels of brightness selection when the phone is active.
- Support screen off when the phone is inactive.
- Backlight time: Always on, 15s, 30s, 1 minute, 2 minutes, 5 minutes, 10 minutes, 30 minutes

Ergonomic Design and the Wall Mount



Desktop Placement



Wall-mountable

- Friendly to install by inserting the stand into the groove.
- Angles: 45° or 60° on the desk , 15° on the wall.
- New design, wall mount more stable.



Efficient Communication

The P1X Series IP Phones supports 6-way audio conferencing, enabling remote meetings for collaborative work.

Set-up meeting Quickly

With just a few steps, you can have your meetings anytime and anywhere

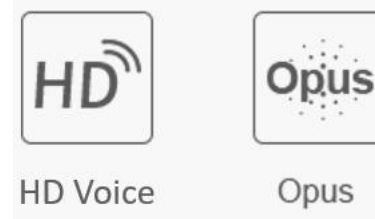
Easy Operation

You can ban and remove attendees, hold the meeting, and split the meeting members into groups.



HD Voice Quality, Efficient Communication

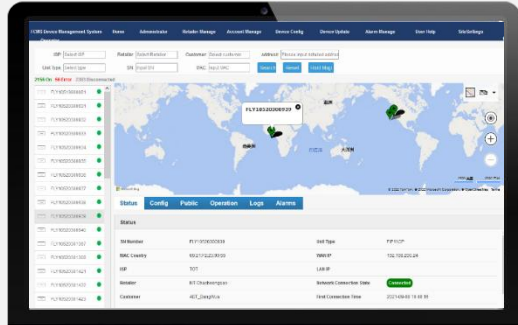
P1X Series support G.722 and Opus wideband codecs, and supports HD voice noise reduction and HD echo cancellation, making communication easier and more efficient.



ETSI Certification Standards

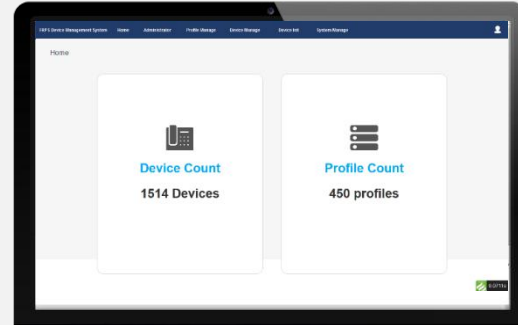
Flyingvoice P1X Series Phones Passed ETSI Certification, (ETSI develops globally applicable standards for information and communication infrastructure, including fixed, mobile, radio, broadcast and Internet technologies).





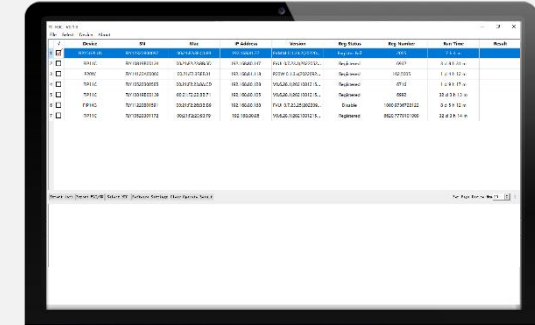
FACS

- Automated remote deployment and management
- Batch distribution of configuration files and software
- Remote diagnostics



FRPS

If you have a provisioning server to deploy the IP phones, you can use FRPS to redirect the phones and achieve plug-and-play.



FDC

- Rapid deployment within the LAN
- Distribution of registration information and phone book, software updates, etc.

- ④ P1X Series phone supports 2 SIP lines, you can select a line to call out.
Press the Navigation Key(the left key ⏪ and right key ⏩) on the keyboard to switch accounts.



FLYINGVOICE
FIP1X Series

VS

FLYINGVOICE
P1X Series

Not Support
(Except FIP15G and FIP15Gplus)

Backlight Adjustment

Support

Old Appearance design

Appearance design

New Appearance design

Desktop phone support 2.4GHz
(Except FIP15Gplus)

Wi-Fi

P10W/P11W are supported 2.4G & 5G

Yes

Line Key

No

Desktop: 30°,45°, 60°
Wall-mounted

Placement method

New stand
Desktop: 45°, 60°
Wall-mounted: 15° more stable



01

Remote Area

For remote areas without a network environment, P1X LTE IP phone can be inserted with a SIM card to effectively solve the problem of phone networking.

Benefits: Support SIM card networking.



02

Enterprise

For group and company with multiple offices, the P1X series phones can provide you with an efficient global office.

Benefits: Free internal calls, easy-to-use, easy management.



03

Hospitality

Hotels rely heavily upon their communications between reservations, front desk and hotel guests.

Benefits: One-button configurable, improved resident experience.

P10LTE and P11LTE support 4G SIM cards, which are ideal for business needs like temporary locations, mobile offices, and places where fixed-line broadband is not available.

Simple, Stable and Reliable Network

4G LTE mobile data as an internet connection makes things simple, and provide a stable connection.

Provide internet to the PC

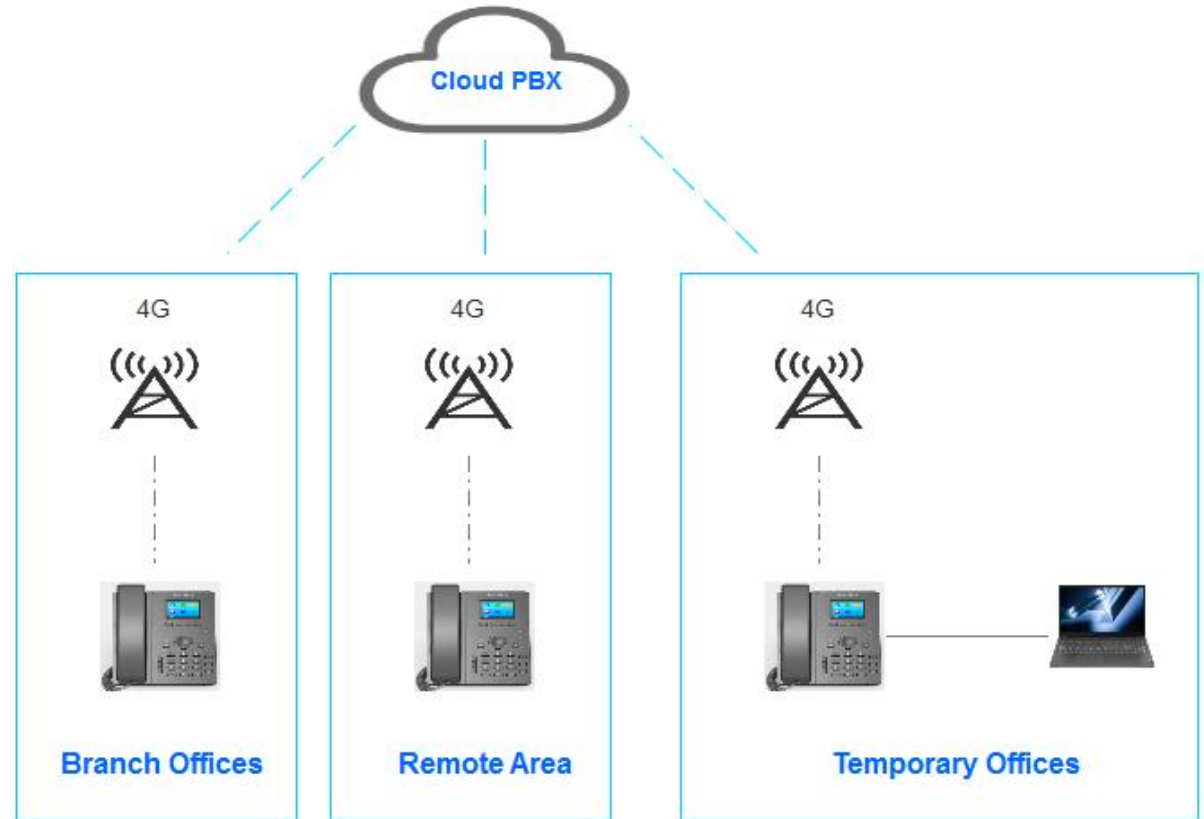
Enjoy the internet by connecting the laptop to the phone with an Ethernet cable. Don't need an extra router or switch.

HD Voice Quality, Efficient Communication

The HD voice technologies on this phone deliver high-quality voice.

Easy to manage and maintain

Phones support FRPS, FACS platform, support remote diagnosis to assist you to configure and maintain phones.



Automated deployment and management

High flexibility, batch deployment, low operating costs.

2000 Phonebook and LDAP

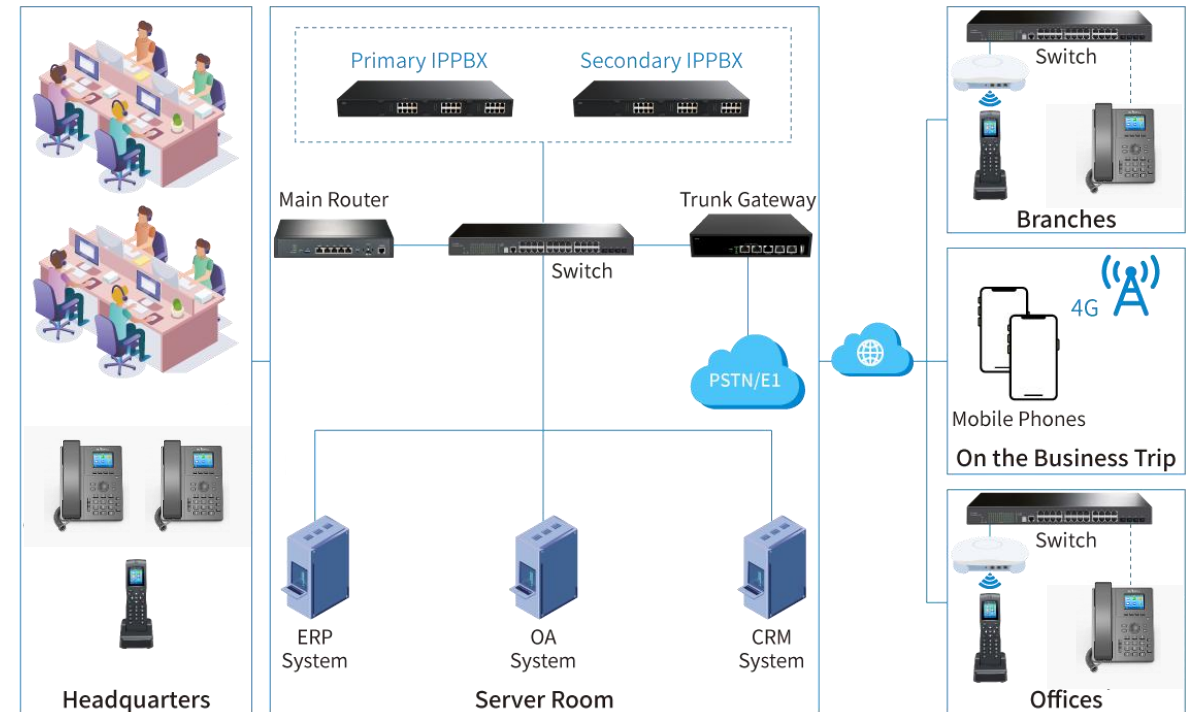
Capable of holding 2,000 contacts; LDAP can connect to the remote phonebook, eliminating the need to store contacts locally.

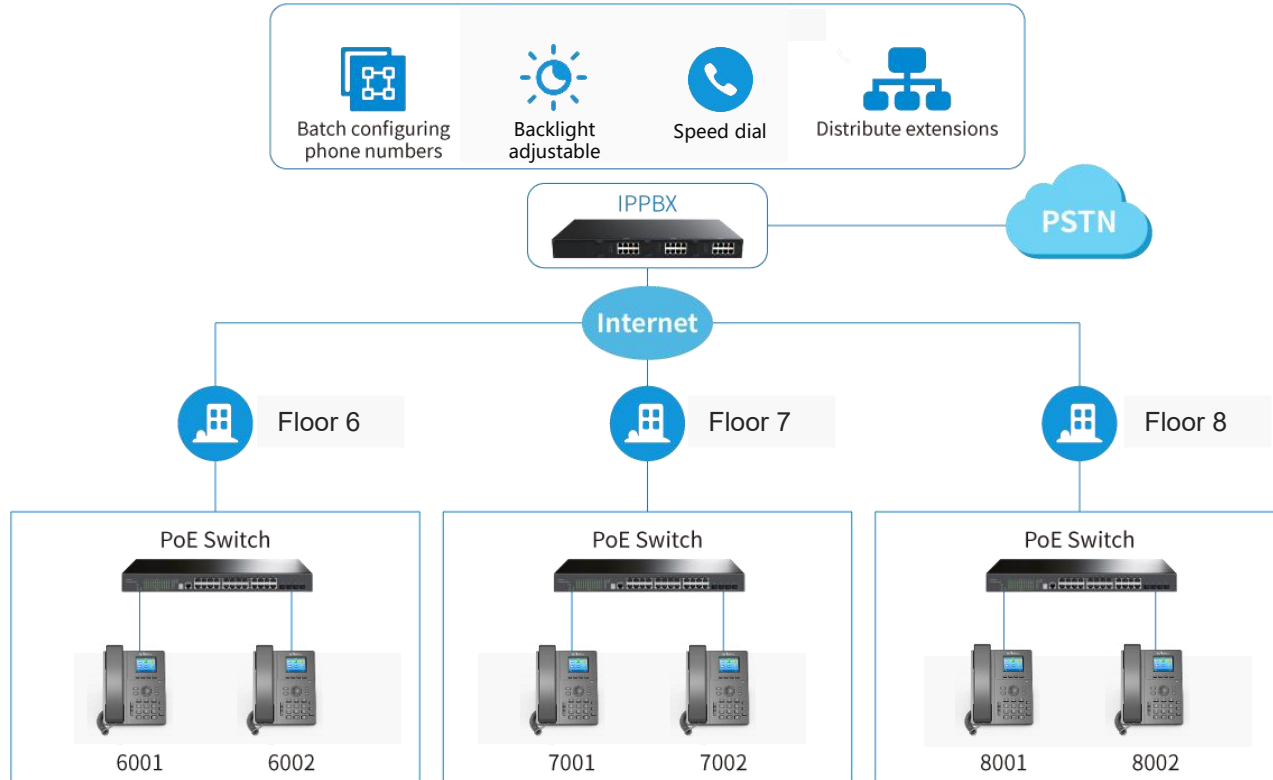
Six-party local meetings

Instead of configuring your phone environment on a complex cloud PBX, you can have local six-party conferencing over your LAN.

High stability for call quality

One million calls (one million calls reached), repeated calls to calls (repeated calls established for 72h), repeated reboot (repeated reboot 500 times)





Adjustable Backlight

The phone screen can be fully blacked out to help you rest at night; it also supports 7 brightness levels.

Auto-provisioning

No need to tediously operate each phone, you can deploy, update, and send messages to the phones in a batch via the platform on your LAN.

Easy to manage and maintain

Phones support FRPS, FACS platform, support remote diagnosis to assist you to configure and maintain phones.

One-touch call to front desk

One-touch call to service center via soft key and function keys.

Product Concept

P2X series IP phones is positioned as Flyingvoice enterprise-level Wi-Fi VoIP phone, adopt higher-performance main control chips, and support more software and hardware functions.

The series includes 9 models: P20, P20P, P20G, P21, P21P, P22P, P22G, P23G, P23GW.

Common features

- 7-Level backlight adjustment and timing screen off
- 2 x RJ45 ports
- 1 x USB 2.0 port (support EHS10 headset adapter, BT50 bluetooth adapter)
- 2 x RJ9 ports (support HP200 wire control headset)
- Integrated 2.4G Wi-Fi
- 6 speed dial keys
- HD voice, Opus
- Up to 6-way conference
- 2000 Phonebooks
- Auto provisioning
- Unified Firmware



P23 / P22



P21 / P20

P2X Series IP Phone - Parameters

FLYINGVOICE

No.	Model	Screen	GE	SIP Lines	PoE	Wi-Fi	USB-Recording	USB-EHS10	USB-Bluetooth	RJ9-Wire control
1	P20/P20P	132 x 64px B/W LCD	-	2	P20P	2.4GHz	√	√	√	√
2	P21/P21P	2.4" TN color LCD	-	4	P21P	2.4GHz	√	√	√	√
3	P22P	384 x 106px B/W LCD	-	2	√	2.4GHz	√	√	√	√
4	P20G	132 x 64px B/W LCD	√	2	√	2.4GHz	√	√	√	√
5	P22G	384 x 160px B/W LCD	√	2	√	2.4GHz	√	√	√	√
6	P23G	2.8" TN color LCD	√	8	√	2.4GHz	√	√	√	√
7	P23GW	2.8" TN color LCD	√	8	√	2.4GHz, 5GHz	√	√	√	√

P2X Series IP Phone - Appearance evolution



P20/P20P/P20G



P21/P21P



P22P/P22G



P23G/P23GW



FIP10/FIP10P



FIP11C/FIP11CP

New Model



FIP13G

P2X Series IP Phone - Upcoming models

FLYINGVOICE



P20/P20P/P20G

- 2 SIP accounts
- PoE (P20P/G)
- 10/100/1000Mbps Ethernet (P20G)
- Level 7 backlight adjustment
- HD Voice
- Built-in 2.4GHz Wi-Fi
- 1×USB2.0 interface
- 6-Way Conference
- Automatic deployment
- Wall-mountable (15°)
- Desktop (45°)

P21/P21P

- 4 SIP accounts
- PoE (P21P)
- 10/100Mbps Ethernet
- Level 7 backlight adjustment
- HD Voice
- Built-in 2.4GHz Wi-Fi
- 1×USB2.0 interface
- 6-Way Conference
- Automatic deployment
- Wall-mountable (15°)
- Desktop (45°)

P22P/P22G

- 2 SIP accounts (no line key)
- PoE
- 10/100/1000Mbps Ethernet (P22G)
- Level 7 backlight adjustment
- HD Voice
- Built-in 2.4GHz Wi-Fi
- 1×USB2.0 interface
- 6-Way Conference
- Automatic deployment
- Wall-mountable (15°)
- Desktop (45°)

P23G/P23GW

- 8 SIP accounts
- PoE
- 10/100/1000Mbps Ethernet
- Level 7 backlight adjustment
- HD Voice
- Built-in 2.4GHz&5GHz Wi-Fi (P23GW)
- 1×USB2.0 interface
- 6-Way Conference
- Automatic deployment
- Wall-mountable (15°)
- Desktop (45°)



Highlights

01

PWM adjustable LCD backlight

02

Built-in 2.4G & 5G Wi-Fi (W model)

03

Enhanced USB2.0 interface functions

04

HP200 RJ9 wire control headset

05

New stand

PWM adjustable LCD backlight

Backlight			
1. Backlight Time	15s	◀▶	
2. Active Level	7	◀▶	
3. Inactive Level	0	◀▶	
Back	Switch	OK	



Display setting of backlight

- Support 7 levels of brightness selection when the phone is active.
- Support screen off when the phone is inactive.
- Backlight time: Always on, 15s, 30s, 1 minute, 2 minutes, 5 minutes, 10 minutes, 30 minutes

Built-in 2.4G & 5G Wi-Fi (W model)

- P2X series IP phones have built-in 2.4G Wi-Fi, and P23GW has built-in 2.4G & 5G Wi-Fi
- 5G wireless antennas support 2T2R, with a maximum negotiated rate of 866Mbps



Enhanced USB2.0 interface functions

1. Integrate USB2.0 interface
2. Support external connection of the following different devices, expand more functions



Bluetooth adapter



USB recording



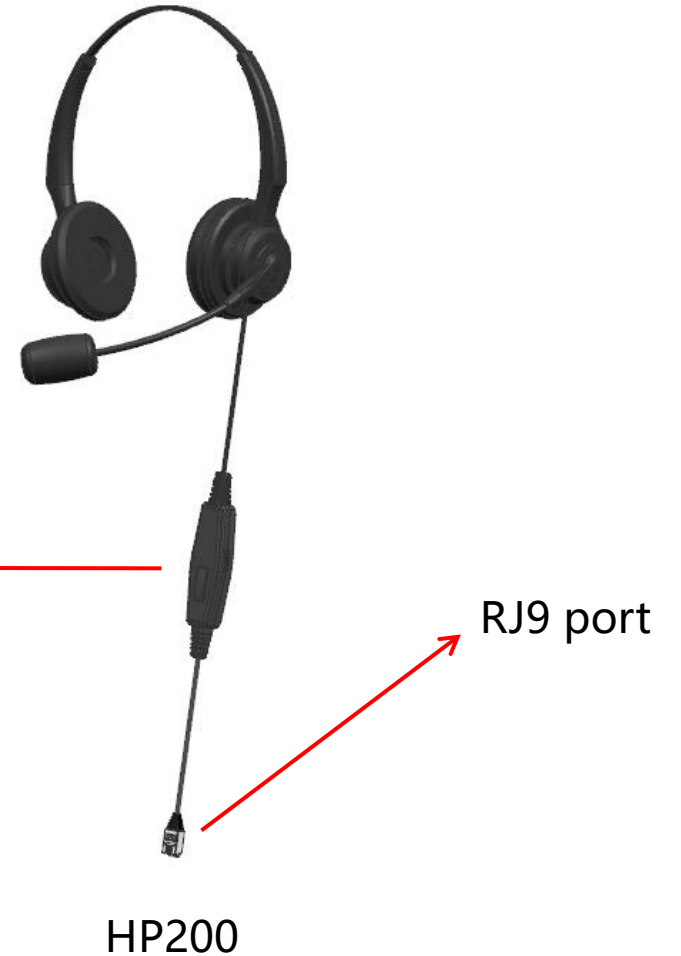
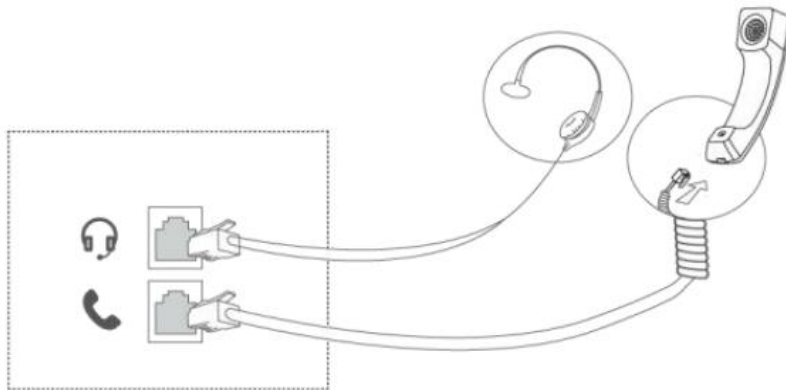
EHS10 adapter



HP200 RJ9 wire control headset

Integrated 2 RJ9 ports, one can be connected to the handset, and the other can be connected to the HP 200 wire control headset.

- Answer calls with one click
- Hang up the call with one click
- Adjust the volume



New stand

Supports desktop and wall mounting



45° Desktop display



15° Wall mounting

FLYINGVOICE
FIP1X Series

VS

FLYINGVOICE
P2X Series

Not Support
(Except FIP15G and FIP15Gplus)

Backlight Adjustment

Support

Old Appearance design

Appearance design

New Appearance design
(P22P, P22G)

Desktop phone support 2.4GHz
(Except FIP15Gplus)

Wi-Fi

All models are supported 2.4GHz
P23GW supports 2.4G & 5G

EHS headset
(32M flash phone only)

USB Function

EHS headset, Bluetooth headset,
HB200 wired control headset

Desktop: 30°,45°, 60°
Wall-mounted

Placement method

New stand
Desktop: 45°
Wall-mounted: 15° more stable



01

Call center

For a call center or office, it is vital to be able to provide an efficient call service.

Benefits: Quick-to-deploy, easy-to-operate



02

Enterprise

P2X series phones with rich functions can provide you with an efficient work office in diverse scenarios.

Benefits: Free internal calls, Functional diversity, easy management



03

School

There are many campus buildings and the distance is far away. IP voice communication is a very effective means for internal staff to work together.

Benefits: One-button configurable, improve communication efficiency

Applicable to agent office scenarios such as call centers and customer centers.

Automated deployment and management

FRPS and FACS platforms provide high flexibility in deployment and maintain, low operating costs.

Customizable IVR

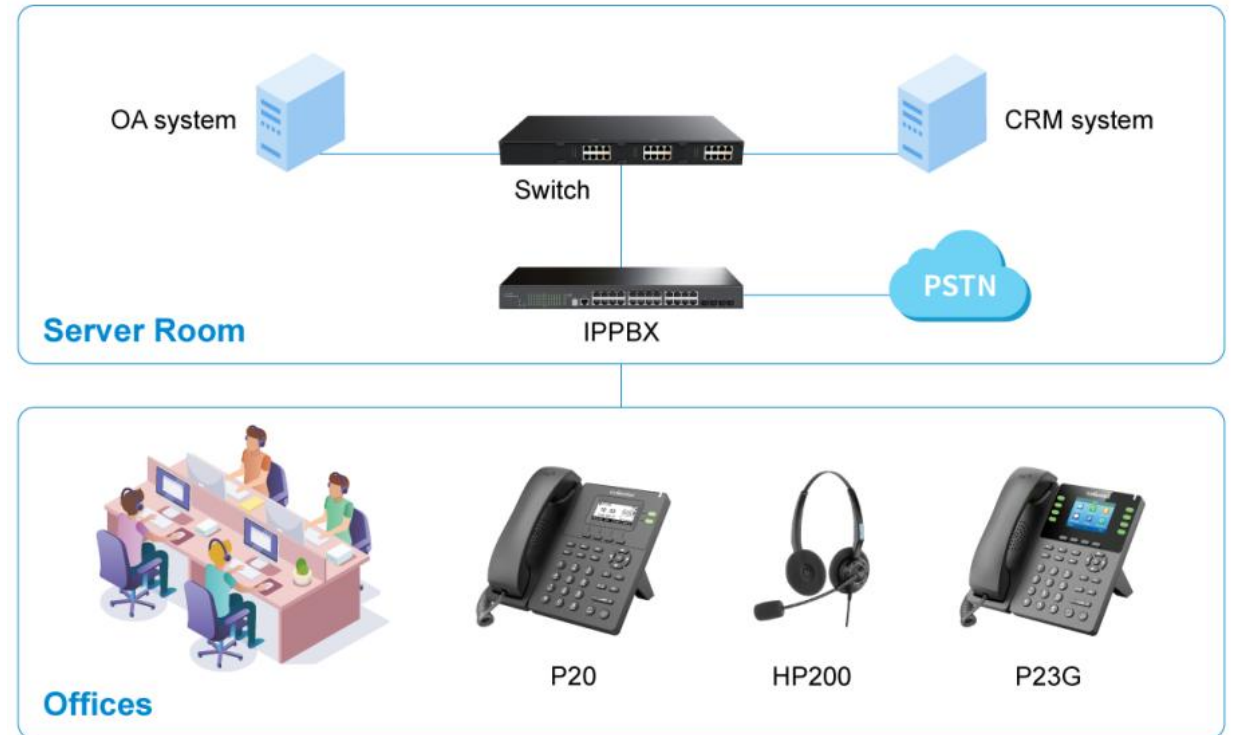
Improve customer experience, making sure calls go to the most appropriate agent.

Rich call features to increase efficiency

Hot desking, call monitoring, call recording, call transferring, call forwarding.

One-click answer or hangup the call

HP200 providing one click to answer or hang up the call, making the call more flexible and efficient.



Applicable to all enterprise office scenarios where wireless networks are deployed.

Automated deployment and management

Phones support FRPS, FACS platform, support remote configuration and diagnosis.

Flexible deployment

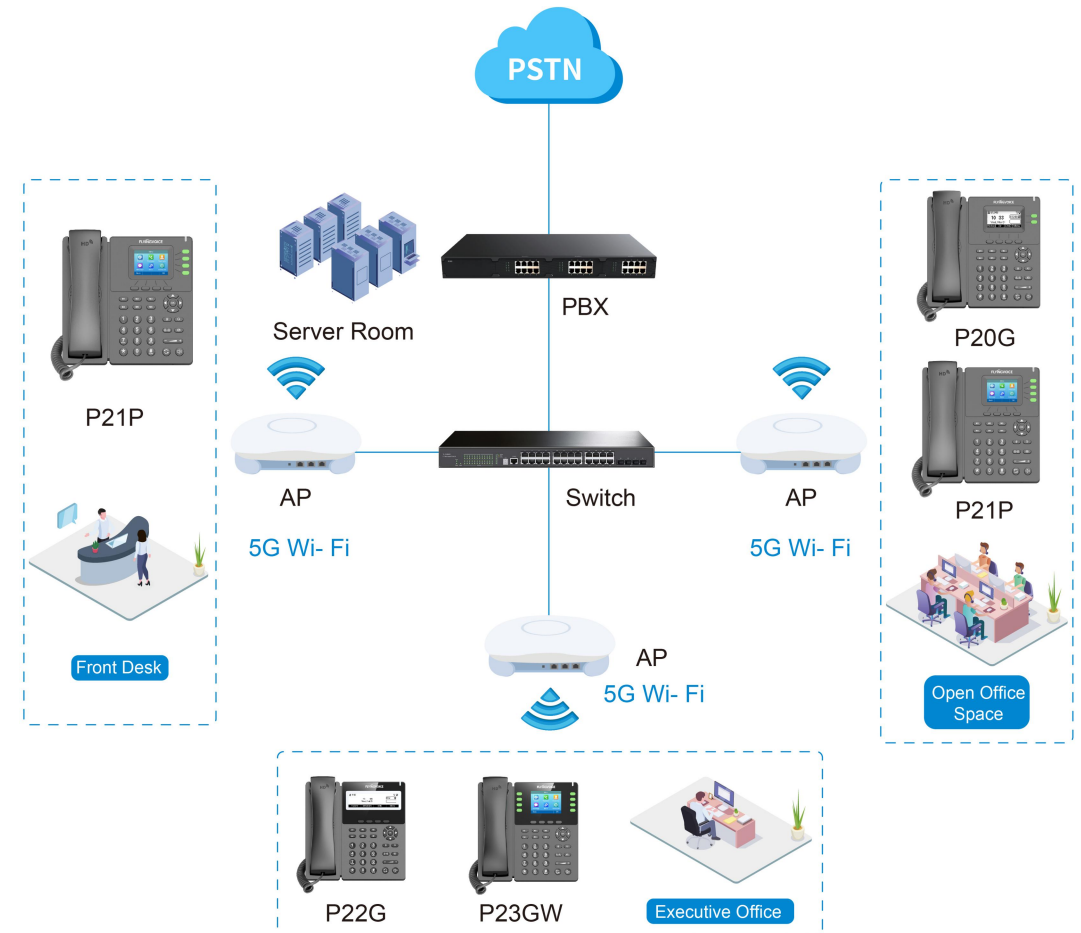
The phone supports 2.4GHz and 5GHz wireless connection, which requires no wiring and can be deployed flexibly.

User-friendly, Functional diversity

High flexibility to use EHS headset, bluetooth headset, HB200 Wire control headset.

Six-party local meetings

Instead of configuring your phone environment on a complex cloud PBX, you can have local six-party conferencing over your LAN.

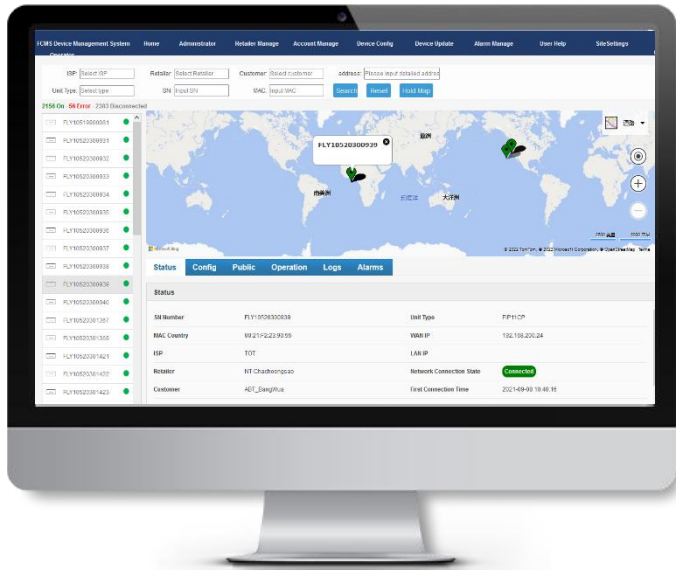




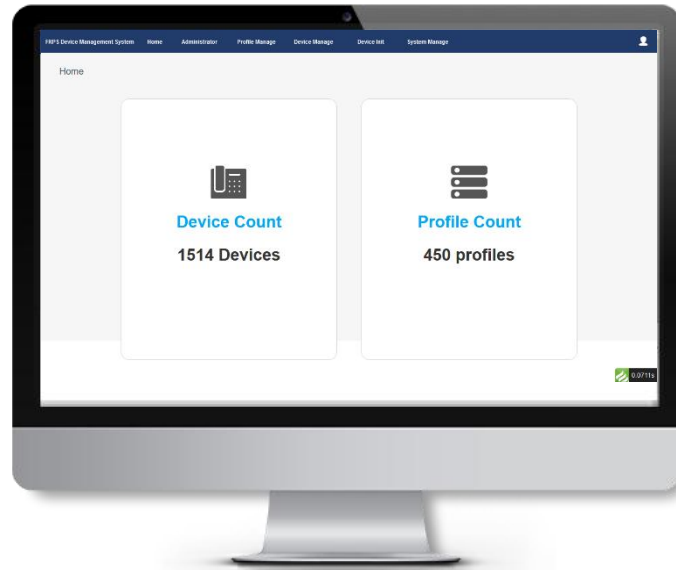
Management



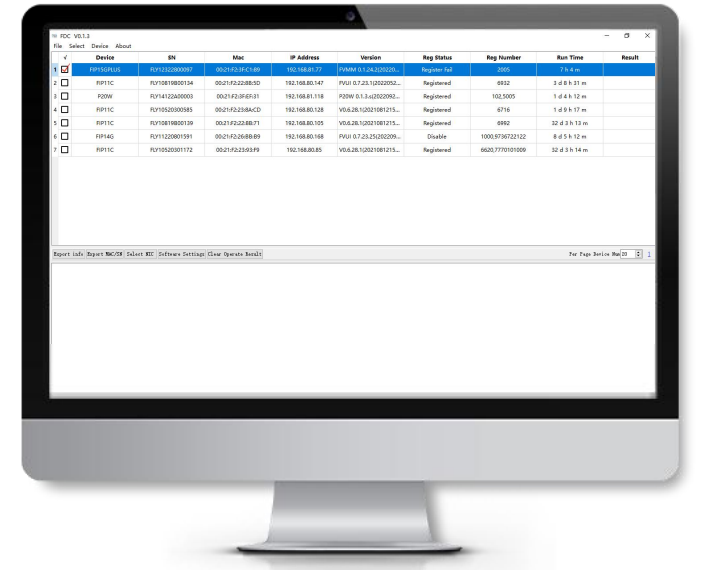
Device Management Platform



FACS



FRPS



FDC

Thanks to the installed centralized firmware, concise interface and simplified process for online platforms such as FACS, FRPS and FDC, ALL the flyingvoice's device is simple to deploy and manage, greatly saving on your operation and maintenance time.

Flyingvoice Auto-Configuration System

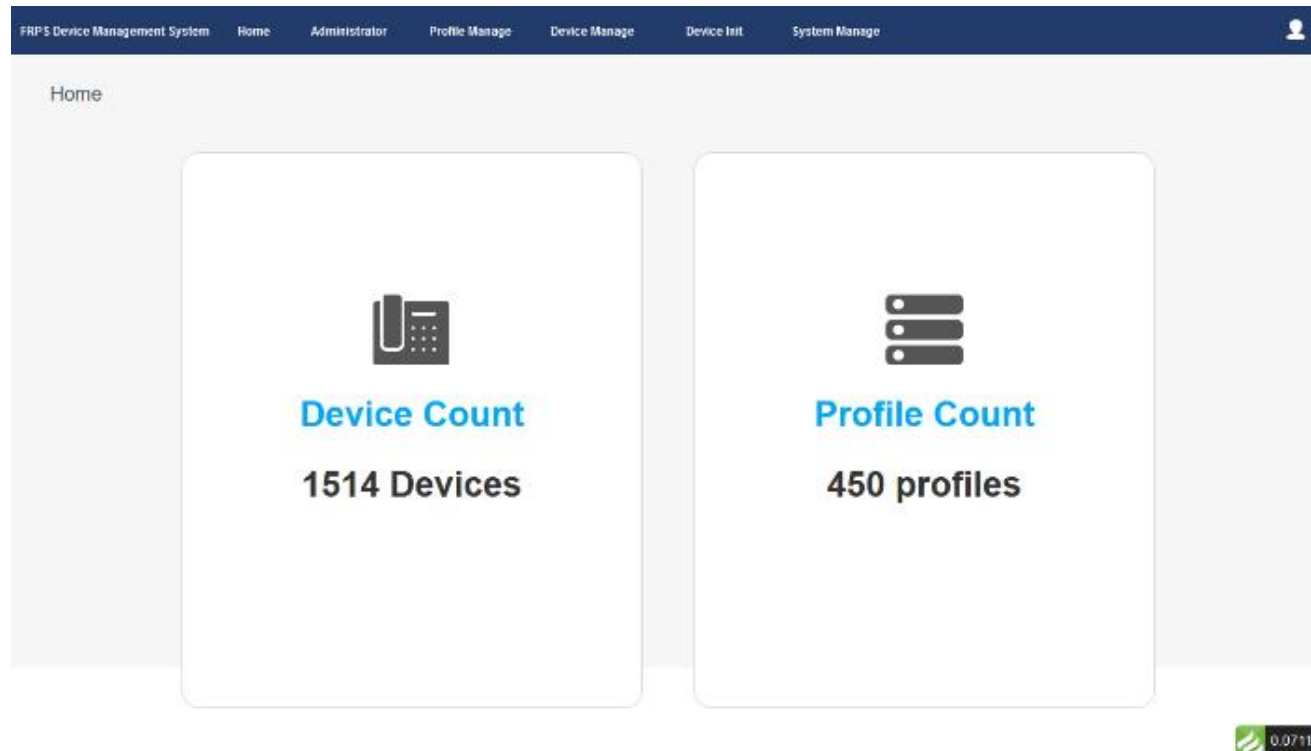
FACS is a cloud platform and designed for users who want a more efficient way to manage VoIP devices with scalability. FACS consists of a wide range of functions aimed at managing, maintaining and upgrading Flyingvoice devices. It is an ideal choice for large businesses, service providers and multi-location enterprises as it allows them to easily deploy and manage a large number of devices. If you want to manage devices remotely, you can choose FACS.

The screenshot displays the FACS Device Management System interface. At the top, there is a navigation menu with options: Home, Administrator, Retailer Manage, Account Manage, Device Config, Device Update, Alarm Manage, User Help, and Site Settings. Below the menu is a search bar with fields for ISP, Retailer, Customer, address, Unit Type, SN, and MAC, along with Search, Reset, and Field Map buttons. A status bar indicates 2156 On, 56 Error, and 2303 Disconnected devices. A world map shows the location of a selected device (FLY10520300939) in Asia. Below the map are tabs for Status, Config, Public, Operation, Logs, and Alarms. The Status tab is active, showing a table with the following data:

SN Number	Unit Type	WAN IP	LAN IP	Network Connection State	First Connection Time
FLY10520300939	FP11CP	192.168.200.24		Connected	2021-09-09 10:40:16

Flyingvoice Redirect Provisioning System

FRPS offers free service for all Flyingvoice users. It allows them to manage Flyingvoice devices with their own cloud management platforms or cloud PBXs. By auto-configuration / provisioning and remote management, the process of mass deployment and management will be simplified to the utmost, greatly saving cost and time.



Local Management Software

FDC is a software used for centralized configuration and management of Flyingvoice IP phones in the local area network. It can read/modify device parameters, upload phone book, upgrade, restart and etc. With FDC, you can manage VoIP phones more conveniently and quickly from PC.

FDC V0.1.3

File Select Device About

	√	Device	SN	Mac	IP Address	Version	Reg Status	Reg Number	Run Time	Result
1	<input checked="" type="checkbox"/>	FIP15GPLUS	FLY12322800097	00:21:F2:3F:C1:89	192.168.81.77	FVMM 0.1.24.2(20220...	Register Fail	2005	7 h 4 m	
2	<input type="checkbox"/>	FIP11C	FLY10819B00134	00:21:F2:22:8B:5D	192.168.80.147	FVUI 0.7.23.1(2022052...	Registered	6932	3 d 8 h 31 m	
3	<input type="checkbox"/>	P20W	FLY14122A00003	00:21:F2:3F:EF:31	192.168.81.118	P20W 0.1.3.s(2022092...	Registered	102,5005	1 d 4 h 12 m	
4	<input type="checkbox"/>	FIP11C	FLY10520300585	00:21:F2:23:8A:CD	192.168.80.128	V0.6.28.1(2021081215...	Registered	6716	1 d 9 h 17 m	
5	<input type="checkbox"/>	FIP11C	FLY10819B00139	00:21:F2:22:8B:71	192.168.80.105	V0.6.28.1(2021081215...	Registered	6992	32 d 3 h 13 m	
6	<input type="checkbox"/>	FIP14G	FLY11220801591	00:21:F2:26:BB:B9	192.168.80.168	FVUI 0.7.23.25(202209...	Disable	1000,9736722122	8 d 5 h 12 m	
7	<input type="checkbox"/>	FIP11C	FLY10520301172	00:21:F2:23:93:F9	192.168.80.85	V0.6.28.1(2021081215...	Registered	6620,7770101009	32 d 3 h 14 m	

Export info Export MAC/SN Select NIC Software Settings Clear Operate Result

Per Page Device Num 20 1

Accelerate Your Business with Flyingvoice

Flyingvoice Network Technology Co., Ltd.

Address:1801-1802, Building 1, Chongwen Park, Nanshan
Zhiyuan, Nanshan District, Shenzhen, China

website: www.flyingvoice.com

Tel:+86 755-26099365